

# GENERAL RA

## REGIONAL ALL-POSITION



LEARN MORE



**NEW REGIONAL ALL-POSITION TIRE**  
A HARD WORKING TIRE DESIGNED  
WITH AN OPTIMAL BALANCE OF  
HIGH REMOVAL MILEAGE COUPLED  
WITH A COMPOUND RESISTANT TO  
CUTS AND TEARS GIVING DRIVERS  
CONFIDENCE IN DEMANDING  
APPLICATIONS.

**100 YEARS OF  
RELIABILITY**

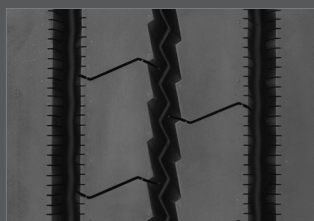


WWW.GENERALTIRETRUCK.COM



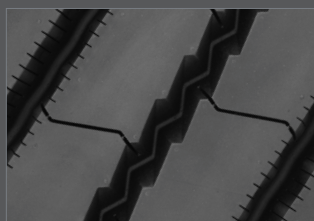
# GENERAL RA

## REGIONAL ALL-POSITION



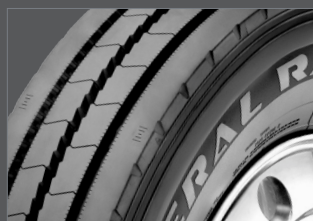
### PROVEN TREAD PERFORMANCE

Large radial grooves for resistance to groove cracking while the wide solid shoulder provides lateral scrub resistance.



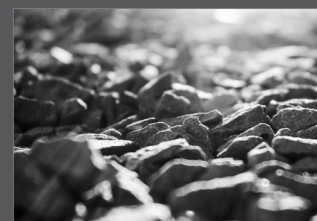
### INNOVATIVE STONE REPELLENT TREAD PATTERN

Patented innovative groove technology leads to minimum stone retention, extending casing life.



### REINFORCED, TOUGH, DAMAGE-REDUCING SIDEWALL

Enhanced bead package and sidewall designed for durability provides high retreadability.



### RESILIENT TREAD COMPOUND

Tread compound balances reliable high mileage on highway with the durability needed for more severe conditions.

**APPLICATIONS:** All-position service in regional hauling, pickup and delivery, and on/off highway

TIRE SIZE	LOAD RANGE	ARTICLE NUMBER	TREAD DEPTH (32nds)	MAX SPEED MPH #	STATIC LOADED RADIUS IN (mm)	OVERALL INFLATED DIAMETER IN (mm)	OVERALL INFLATED WIDTH IN (mm)	LOADED SECTION WIDTH IN (mm)	APPROVED RIMS	MIN DUAL SPACING IN (mm)	REVS PER MILE (km)	TIRE WEIGHT LB (kg)	MAX LOAD@INFLATION			
													SINGLE LB (kg)	SINGLE PS (KPa)	DUAL LB (kg)	DUAL PS (KPa)
TUBELESS TIRES ON 15 DEGREE DROP CENTER RIMS																
11R22.5	H	05122920000	20	75	19.3 (490)	41.4 (1052)	11.1 (281)	11.9 (302)	8.25, 7.50	12.5 (318)	500 (311)	118 (54)	6610 120 (3000 830)		6005 120 (2725 830)	
295/75R22.5	H	05122910000	20	75	18.6 (472)	40.1 (1019)	11.0 (279)	12.5 (318)	8.25, 9.00	12.5 (318)	516 (321)	113 (51)	6940 120 (3150 830)		6175 120 (2800 830)	
11R24.5	H	05122930000	20	75	20.3 (516)	43.4 (1103)	11.1 (281)	11.9 (302)	8.25, 7.50	12.5 (318)	477 (296)	128 (58)	7160 120 (3250 830)		6610 120 (3000 830)	
285/75R24.5	H	05122940000	20	75	19.3 (490)	41.3 (1049)	10.8 (274)	12.0 (305)	8.25	12.5 (318)	501 (311)	118 (53)	6780 120 (3075 830)		6175 120 (2800 830)	

Note - Rim listed first is the measuring rim. Minimum Dual Spacing calculated without chains. # - Exceeding the lawful speed limit is neither recommended nor endorsed. Overall widths will change 0.1 inch (2.5 mm) for each 1/4 inch change in rim width. Minimum dual spacing should be adjusted accordingly. Continental Tire the Americas, LLC. reserves the right to change product specifications at any time without notice or obligations. Please consult rim manufacturers load and inflation limits. Never exceed rim manufacturers limits without permission of component manufacturer.