

CraneMaster and TerminalMaster V.ply

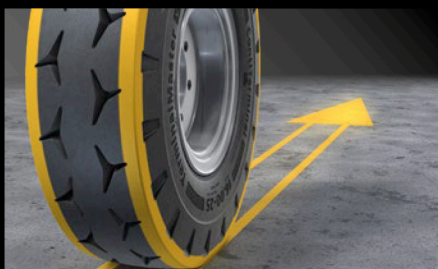
Strong shoulders with a heavy load to carry

CraneMaster tires have narrow tread blocks with rounded contours which reduce stress when turning on the spot; this enables high maneuverability while minimizing the risk of tread cracks. Their wide tread area offers a stable load platform-essential when moving heavy loads at slow speeds.

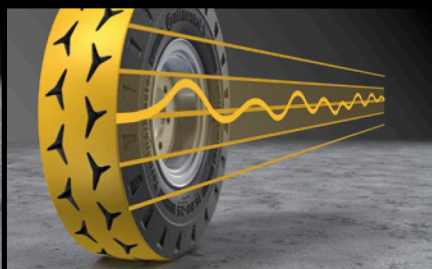
These tires are ideal for heavy vehicles carrying heavier loads at low speed. Both are intended for AGVs, and the CraneMaster can also be used on rubber-tired gantry cranes.

TerminalMaster V.ply tires are designed with a closed shoulder, which heightens stability precision while travelling in a straight line and cornering. The three-ribbed design keeps tread vibration to a minimum, an advantage for AGVs as fewer steering corrections are required. Finally, the innovative Port Plus Compound offers improved abrasion resistance to increase the lifetime of the tire.

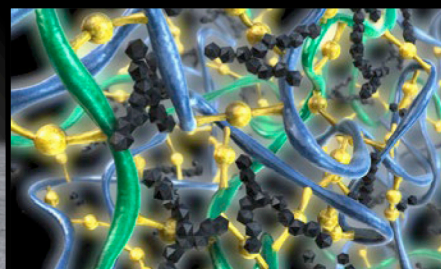
TerminalMaster V.ply



Precise track holding



Reduced tread vibration**



Increased lifetime

Feature	<ul style="list-style-type: none"> › Closed shoulder tread design 	<ul style="list-style-type: none"> › Three ribbed tread design 	<ul style="list-style-type: none"> › Port Plus Compound
Effect	<ul style="list-style-type: none"> › Stability on straight lines and corners 	<ul style="list-style-type: none"> › Low tread vibration 	<ul style="list-style-type: none"> › Resistance to abrasion

Dimensions

16.00-25
21.00-25

Type

TL
TL

Sensor

③
③



③ Tire can be fitted with sensor by local service partner.

*Tire sensor cannot be used in tube type fitment.

**Important for AGVs as less automated steering corrections are required.