

**EMERALD**

OFF-THE-ROAD TYRE SOLUTIONS  
**PRESS-ONBAND**

Emerald Resilient Tyre Manufacturers Pvt Ltd - Market leader in industrial tyre and wheel segment in india offers customised solutions through it's range of products that meets the diversified requirements of material handling industry at large in the globe.

Emerald offers variable versions in press on segment that meet every single application requirements of the customer. This is achieved through the optimum combination of high quality raw material usage, superior compounding techniques, unique design features and indigenously researched advanced technology.

## FEATURES

- Wear resistant tread compound for extended life
- Wider tread profile for reduced work load
- Low rolling resistance design for higher energy efficiency
- Superior bonding technology for trouble free running
- Wider range covering all popular sizes
- Tread in Smooth & Lug patterns
- Available in Non-Marker and Polyurethane versions
- Customised compounds available on request

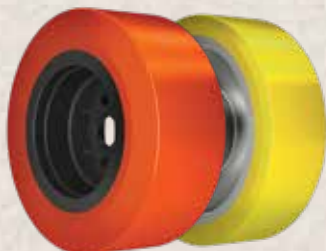
## KEY APPLICATIONS

- FORK LIFTS
- TROLLEYS
- PALLET TRUCKS
- PLATFORM TRUCK
- STACKERS
- ROTATORS



### DIRECT BONDING WHEELS

- Direct bonding wheel designed to customised mounting hole profile
- Designed for enhanced performance using high tensile compound
- Offers superior abrasion resistance & low rolling resistance properties



### POLYURETHANE (PU) PRESS-ONS

- Emerald PU based products offers exceptional dynamic properties and available in popular press-on size range
- Unique process technology for excellent bonding properties of PU compound with high quality steel base
- Optimum PU Hardness – 90-95 Degree Shore A
- PU wheel core in Mild steel, Cast iron & Aluminium versions

# TECHNICAL SPECIFICATION

NOMINAL DIMENSIONS (inch)	S	L	R	J	NOMINAL DIMENSIONS (mm)	UPTO 10 kmph		UPTO 16 kmph		UPTO 25 kmph		OTHER VEHICLES <16kmph
						LOAD WHEEL (kg)	STEER WHEEL (kg)	LOAD WHEEL (kg)	STEER WHEEL (kg)	LOAD WHEEL (kg)	STEER WHEEL (kg)	
8.5 x 4 x 4	•											
10 x 4 x 6 ¼		•				785	640	699	582	565	461	
10 x 5 x 5		•				1100	900	980	825	800	655	
10 x 5 x 6												
10 x 5 x 6 ¼	•	•			254 x 127 x 158.8	1030	840	915	770	745	610	730
	•				250 x 130 x 140	1065	870	948	792	775	635	
	•				250 x 130 x 145	1065	870	948	792	775	635	
	•				250 x 90 x 170	695	570	619	518	500	410	
	•				300 x 100 x 203	925	755	823	687	635	520	
10 x 5 x 6 ½	•	•				1010	830	905	760	735	605	
	•				300 x 15 x 220	690	560	610	510	470	390	
12 x 5 x 8	•					1190	980	1065	890	865	710	
13 x 3 x 8	•					785	645	705	590	570	470	
13 x 3 ½ x 8		•				870	710	774	646	626	511	
13 x 4 ½ x 8		•			330 x 114 x 203.2	1120	920	1000	840	815	665	800
13 x 5 ½ x 8		•			343 x 140 x 203.2			1345	1130			
13 ½ x 5 x 8	•					1290	1055	1148	960	929	760	
14 x 4 ½ x 8	•	•			356 x 114 x 203.2	1170	960	1045	875	845	695	830
14 x 5 x 10	•					1335	1090	1188	992	961	785	
15 ½ x 5 x 10	•	•			394 x 152 x 254	1870	1530	1665	1400	1070	880	1330
		•			405 x 100 x 305	1160	950	1032	865	835	684	
					425 x 300 x 305	4245	3485	3790	3185	3085	2530	
		•			450 x 300 x 305	4656	3815	4144	3472	3352	2747	
		•			400 x 100 x 310			1000	800			
		•			430 x 160 x 320							
		•			405 x 120 x 305			1300	875			
16 x 5 x 10 ½	•	•		•	406 x 127 x 266.7	1510	1240	1345	1130	1095	900	1080
16 x 6 x 10 ½	•	•		•	406 x 152 x 266.7	1910	1570	1710	1435	1385	1135	1360
	•				470 x 270							
	•				500 x 280							
16 x 7 x 10 ½		•				2325	1910	2070	1740	1685	1380	
15 x 5 x 11¼	•					1390	1140	1240	1040	1015	830	
15 x 6 x 11¼	•					1715	1410	1530	1285	1250	1025	
16 x 6 x 11 ½		•			406 x 152 x 295			1600	1400			
16 ¼ x 5 x 11¼	•	•		•	413 x 127 x 285.8	1530	1250	1360	1145	1110	910	1090
16 ¼ x 6 x 11¼	•	•		•	413 x 152 x 285.8	1920	1580	1715	1440	1395	1140	1370
16¼ x 7 x 11¼	•	•				2325	1900	2060	1735	1685	1385	
17 x 5 x 12 ⅞		•			432 x 127 x 308			1400	1180	1145	940	
17¼ x 5 x 11¼		•			438 x 127 x 285.8			1500	1250			
		•			450 x 130 x 320			1300	1100			
		•			450 x 160 x 320			1600	1350			
18 x 5 x 12 ⅞	•	•		•	457 x 127 x 308	1640	1350	1470	1230	1195	980	1170
18 x 6 x 12 ⅞	•	•		•	457 x 152 x 308	2100	1720	1870	1575	1520	1245	1500
18 x 7 x 12 ⅞	•	•		•	457 x 178 x 308	2550	2100	2280	1910	1855	1520	1820

\*S - Smooth L - Lug R - Rib J - Traction

NOMINAL DIMENSIONS (inch)	S	L	R	J	NOMINAL DIMENSIONS (mm)	UPTO 10 kmph		UPTO 16 kmph		UPTO 25 kmph		OTHER VEHICLES <16kmph
						LOAD WHEEL (kg)	STEER WHEEL (kg)	LOAD WHEEL (kg)	STEER WHEEL (kg)	LOAD WHEEL (kg)	STEER WHEEL (kg)	
18 x 8 x 12 1/8	•	•		•	457 x 203 x 308	3000	2475	2680	2250	2180	1785	2150
18 x 9 x 12 1/8	•	•		•	457 x 229 x 308	3450	2850	3090	2600	2520	2065	2475
		•			500 x 160 x 370							
21 x 5 x 15		•			533 x 127 x 381			1640	1385			
21 x 6 x 15		•				2185	1790	1945	1629	1705	1400	
21 x 7 x 15	•	•		•	533 x 178 x 381	2875	2350	2560	2150	2085	1710	2050
21 x 8 x 15	•	•			533 x 203 x 381	3375	2775	3025	2540	2455	2010	2425
21 x 9 x 15		•		•	533 x 229 x 381	3900	3200	3475	2920	2835	2325	2775
20 x 4 x 16			•			1505	1230	1339	1119	1084	886	
20 x 6 x 16	•	•	•		508 x 152 x 406.4			2010	1690			
20 x 8 x 16	•	•	•		508 x 203 x 406.4	3010	2470	2685	2255	2185	1790	2150
20 x 9 x 16			•			3445	2820	3066	2566	2480	2030	
22 x 6 x 16		•		•	559 x 152 x 406.4	2450	2000	2180	1830	1765	1450	1740
22 x 7 x 16		•			559 x 178 x 406.4	2975	2450	2650	2230	1765	1450	2125
22 x 8 x 16	•	•		•	559 x 203 x 406.4	3500	2875	3130	2625	2545	2085	2500
22 x 9 x 16	•	•		•	559 x 229 x 406.4	4050	3325	3600	3025	2940	2410	2875
22 x 10 x 16		•				4570	3745	4067	3408	3320	2725	
22 x 12 x 16		•			559 x 305 x 406	5640	4620	5020	4204	4095	3360	
22 x 12 x 17 3/4	•	•			559 x 305 x 451			4300	3610			
22 x 14 x 16	•	•			559 x 356 x 406	6710	5500	5972	5005	4831	3960	
22 x 16 x 16	•	•				7760	6360	6906	5788	5587	4579	
		•			580 x 340 x 406			6000	5100			
	•				550 x 160 x 410							
	•				645 x 250 x 410	4810	3930	4180	3430	3305	2745	
		•			645 x 350 x 410							
		•			630 x 200 x 480	3525	2885	3137	2625	2538	2077	
		•			630 x 220 x 480			3500	2950			
	•				645 x 250 x 480	4670	3825	4156	3481	3362	2754	
	•				660 x 200 x 480							
	•				660 x 250 x 480							
26 x 10 x 19	•											
26 x 6 x 20		•				2755	2255	2452	2052	1984	1624	
26 x 7 x 20		•			660 x 178 x 508			2880	2420			
26 x 8 x 20		•				3965	3250	3529	2958	2855	2340	
28 x 12 x 22	•	•			711 x 305 x 559	6750	5530	6008	5032	4905	4020	4800
28 x 15 x 22	•	•			711 x 381 x 559	8700	7130	7743	6488	6264	5134	
28 x 16 x 22	•					9280	7600	8259	6916	6770	5550	
	•				920 x 240 x 670	5045	4145	4500	3780	3660	3000	
	•				920 x 400 x 670							

\*S - Smooth L - Lug R - Rib J - Traction



**EMERALD RESILIENT TYRE  
MANUFACTURERS PVT. LTD.**  
PLOT NO.2, 2ND STREET, PHASE 1  
PORUR GARDEN, VANAGARAM  
CHENNAI 600 095, INDIA  
**E-MAIL** enquiry@emeraldtyres.com  
**TEL** +91 44 6646 0555 / 0566  
**FAX** +91 44 6646 0550

**EMERALD MIDDLE EAST FZE**  
P.O BOX 86009, RAKIA FREE ZONE  
RAS AL KHAIMAH, U.A.E.  
**E-MAIL** info@emeraldmiddleeast.com  
**TEL** +971 7 2433195  
**FAX** +971 7 2433189

**EMERALD TYRES EUROPE B.V.B.A.**  
PATHOEKEWEG 130 C  
8000 BRUGGE, BELGIUM  
**E-MAIL** info@emeraldtyres.com  
**TEL** +32 50310900



**SOLID RESILIENTS • PRESS-ONS • DIRECT BONDING WHEELS • PU WHEELS • INDUSTRIAL PNEUMATICS  
BUTYL TUBES & FLAPS • CONTAINER PADS • INDUSTRIAL WHEEL RIMS • FITMENT PRESS & FIXTURES**

Emerald reserves the right to change the contents of this brochure without any prior notice

2019.08