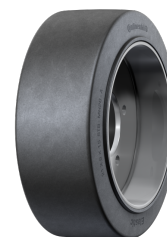


MH20 STB

406/152 - 267

Tire size imperial (16X6X10 1/2) Tire size metric 406/152 - 267



Tire dimensions

Continental Values							
Overall diameter	[mm]	404	±1%	Weight (approximate)	[kg]	17.4	
Overall width	[mm]	152	±1mm	Rolling circumference*	[mm]	1311	±2.5%
Tread width	[mm]	118	±1%	Static radius	[mm]	193	±0.5%
Tread edge diameter	[mm]						

*at reference load

Tire load capacity [kg] according to ETRTO

Type	Other vehicles ¹⁾ at						Fork Lift Trucks ²⁾			
	Station-ary	Hand-drawn	max.speed				max. 10 km/h		max. 16 km/h	
			6 km/h ³⁾	10 km/h ³⁾	16 km/h ³⁾	Ro-Ro Use ⁴⁾	Load wheel	Steer wheel	Load wheel	Steer wheel
Steel Base			1915	1570	1435		1915	1570	1710	1435
Steel Wire Reinf.										

Available base versions

		Steel Base		Steel Wire Reinforced			
		Cylindrical		Conical rim			
				Center-Split		Offset-Split	
							
Power wheel	Art. No.	13408050000					
Road wheel	Art. No.						
Clean	Art. No.	13408510000					

Notes

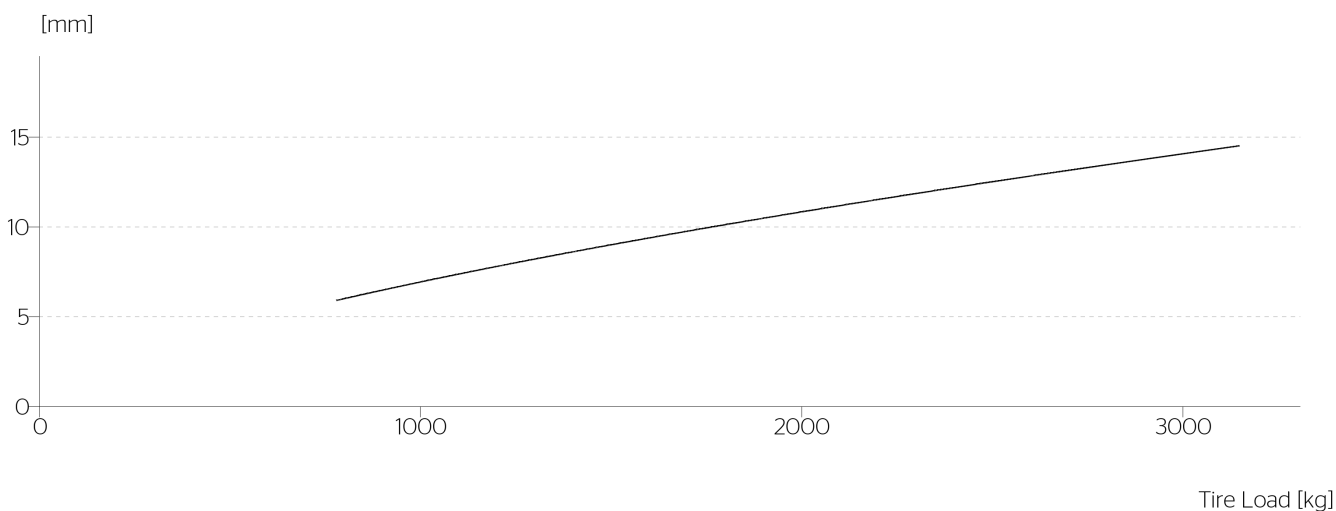
¹⁾ Other vehicles: platform trucks, tractive units, straddle carriers, fork lifts without counterweight etc.

²⁾ Only for intermittent use. Load capacity for sustained use available on request.

³⁾ Max distances 2000 m.

⁴⁾ Max. distances 2000 m. Standstill of at least three hours between driving cycles.

Deflection



$$\text{Ground Contact Area [cm}^2\text{]} = \frac{\text{Tire Load [kg]}}{\text{Ground Press. [MPa]} \times 10}$$

Ground Pressure

